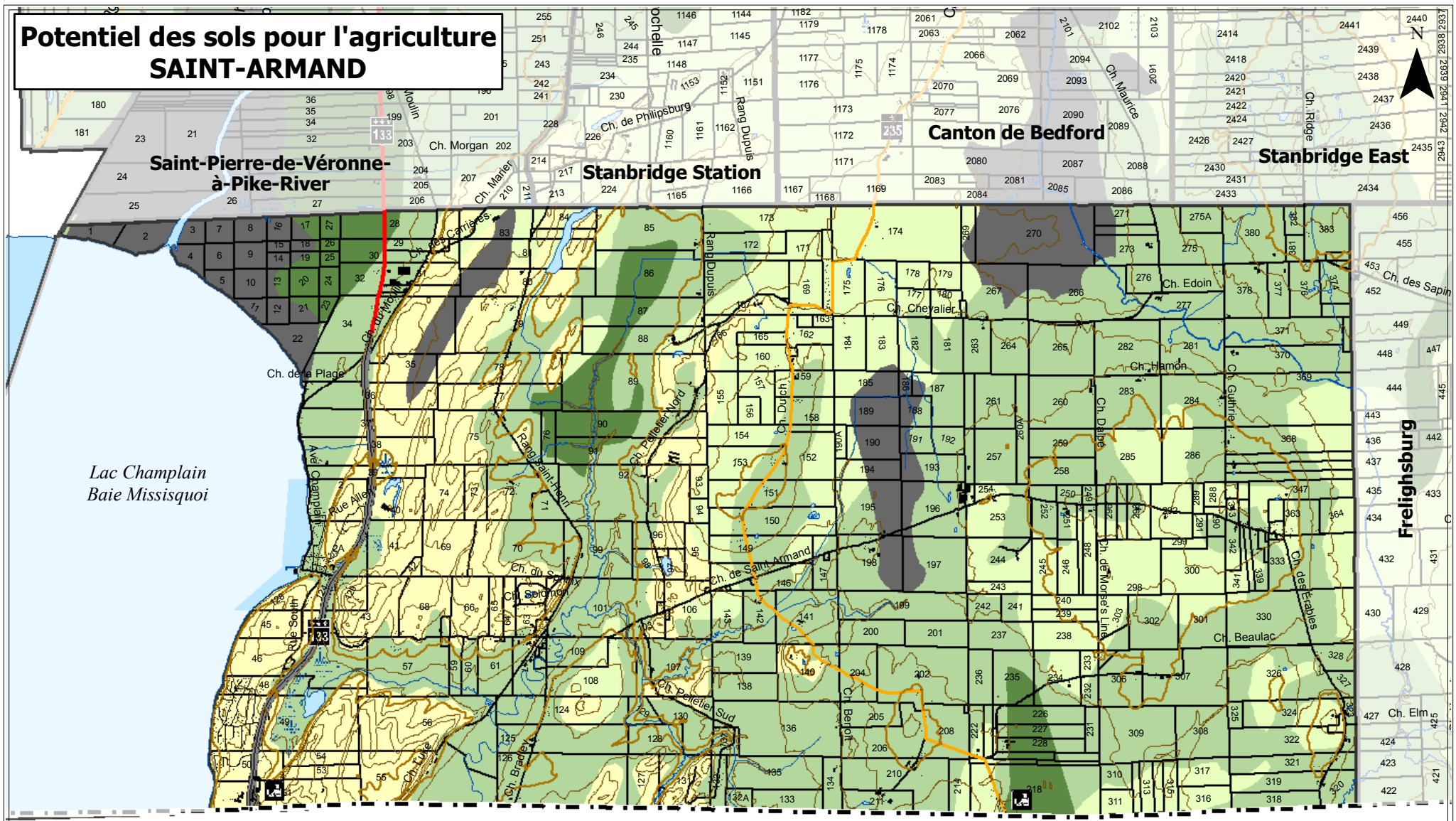







# Potentiel des sols pour l'agriculture SAINT-ARMAND



Vermont (États-Unis)

SOURCE:  
Photocartoèque québécoise  
Ministère des Ressources Naturelles  
Cartes topographiques  
1:20 000, MTM 8, NAD 83, 1993  
ARDA, 1973

### Potentiel des sols

- |   |                   |   |                 |
|---|-------------------|---|-----------------|
|  | Très bon (1 et 2) |  | Faible (7)      |
|  | Bon (3)           |  | Terre organique |
|  | Moyen (4 et 5)    |   |                 |

1:60 000



Carte 2

